

The background of the slide is a blurred industrial scene. In the foreground, there are large, dark, curved pipes or conduits. In the background, several tall, vertical smokestacks or chimneys are visible, some with a slight glow, suggesting an active industrial facility. The overall lighting is dim, with a warm, hazy atmosphere.

Know Your People Are Safe!

CONNECTED Personal Safety Monitoring

A person wearing a headset is working at a computer with multiple monitors. The monitors display various data, including maps and charts. The text "Where Do Traditional Portable Gas Detectors Fall Short?" is overlaid on the image.

Where Do Traditional Portable Gas Detectors Fall Short?

Traditional Portable Gas Detectors

H₂S gas leak

00m 00s

**Traditional
approach**

00m 01s

Gas detector goes off —
no one nearby to hear it

- When an incident occurs, **ONLY** the user is notified
- In a worst case scenario, assistance can arrive too late

02h 00m

Check-in missed

02h 05m

Supervisor concerned

02h 10m

Search begins

03h 30m

Rescue/Recovery

Blackline Safety G7



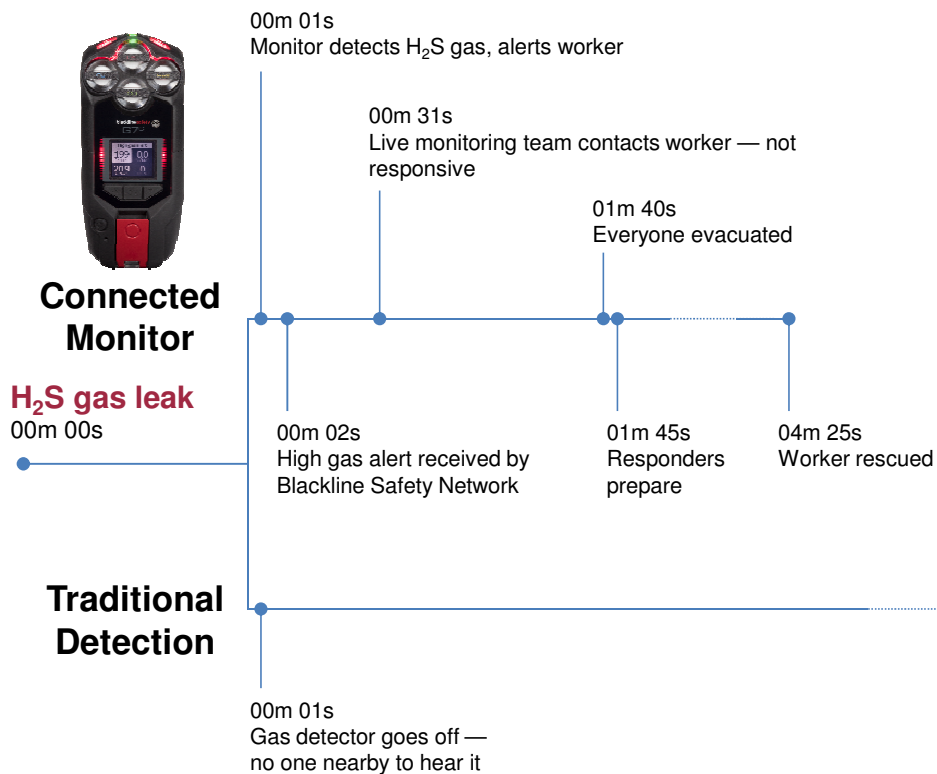
CONNECTED Personal Monitoring

Why “Connected” Monitoring?



- **Alarm Events are no longer “Private Alarms”**
 - Instant text and email notification
 - Live monitoring via web portal.
 - GPS Location Information

A Search & Rescue is Converted to a RAPID Rescue



- When an incident occurs, every second counts
- Never before has a comprehensive safety monitoring system delivered:
 - Real-time situational awareness
 - Incident management tools
 - Technology to make a difference

02h 00m Check-in missed
02h 05m Supervisor concerned
02h 10m Search begins
03h 30m Rescue/Recovery

Why Stop At Just Gas Detection?



Personal Safety Monitoring Features

- Fall detection
- No-motion detection
- SOS latch
- Check-in
- Mass-notifications for evacuations

A person wearing a blue uniform with reflective yellow-green stripes is shown in profile, holding a handheld electronic device. The background is a blurred outdoor scene with trees and a bright sky. The text "LIVE DEMONSTRATION" is overlaid in white, bold, sans-serif font.


LIVE DEMONSTRATION

EMAIL & TEXT NOTIFICATION

Email Notification

Mark Dundas

From: noreply@blacklinesafety.com on behalf of Blackline Safety
Sent: Tuesday, September 18, 2018 11:42 AM
To: Mark Dundas
Subject: Alert Mark Dundas - SOS Alert



Mark Dundas
has an **SOS Alert**

[Manage in the Safety Portal](#)

Triggered by Device
2018-09-18 11:41:58 CDT

Received by Server
2018-09-18 11:42:02 CDT

Response Protocol

---THIS IS A DISTRIBUTOR DEMONSTRATION DEVICE. DO NOT DISPATCH UNLESS REQUESTED---

----- GAS ALERTS/SOS Alerts/Fall Detection/No Motion/Missed Check-In -----

STEP 1: Call the G7c device and validate the need for assistance.

If no response, proceed to STEP 2.

STEP 2: Wait 1 minute, and repeat STEP 1 two more times. If still no answer, proceed to STEP 3.

STEP 3: Log notes and resolve the alert as demo/training.

Voice Calling
Dial the number below to call the device:
[+1 855-910-8100 x 415035](tel:+1855-910-8100x415035)

User Information
Mark Dundas
Mobile: 713-818-0812
Work: 713-541-9800
President, mdundas@detect-measure.com
mdundas@detect-measure.com

Emergency Response Contacts
Priority : 1
Mark Dundas
Mobile: 713-818-0812

Last Known Location (2018-09-18 11:33:39 CDT)



Latitude & Longitude
[29.9909672, -95.1938671](#)

Text Notification

Verizon LTE 9:26 PM 49%
(587) 315-0704

Today 11:42 AM

Mark Dundas
Alert: SOS Alert
Time: 2018-09-18 11:41:58
Device Call: [+1 855-910-8100 415035](tel:+1855-910-8100x415035)

Text Message

App Store, Apple Pay, Music, Messages, Safari, Phone



PORTFOLIO

Monitoring Product FAMILY



Cellular



Cellular/Satellite

G7 Bridge



- G7 Bridge device is a portable base station that provides satellite and cellular link.
- G7 Bridge communicates with the G7x through an industrial-quality 900 MHz radio link
- Iridium satellites or 3G cellular data communication with the Blackline Safety
- G7 Bridge is self-powered and portable, allowing you to quickly move it from one vehicle to another

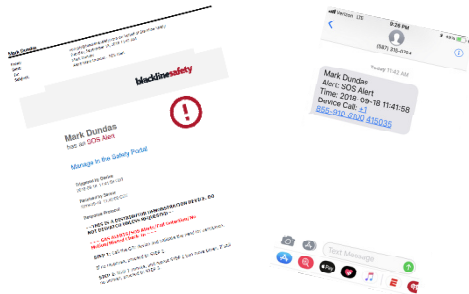
MODULAR AND CONFIGURABLE



- Field-replace cartridges in less than a minute
- Customize based upon scenarios
- Choice of gases — CO, H₂S, LEL, O₂, NH₃, CL₂, SO₂, HCN, PID and others in development
- Real-time, wireless configuration changes
- Wireless, automatic firmware updates
- Device configuration displayed to user upon startup
- **Optional Pump available in October**



Notifications and RemoteMonitoring



Text & Email
Notifications



Monitoring Portal



24/7 Live Monitoring
& Support

G7 DOCK



- The first compact, affordable dock
- Minimalist design where the G7 device manages testing
- Bump test and calibrations are performed automatically when G7 placed into dock
- G7 communicates results in real-time to Blackline Live for compliance reporting
- G7 Dock settings are stored in Blackline Live and updated via G7 device
- Supports individual gas and gas mixtures
- Can be used as a G7 charging station

COMPLETE, TURN-KEY SYSTEM

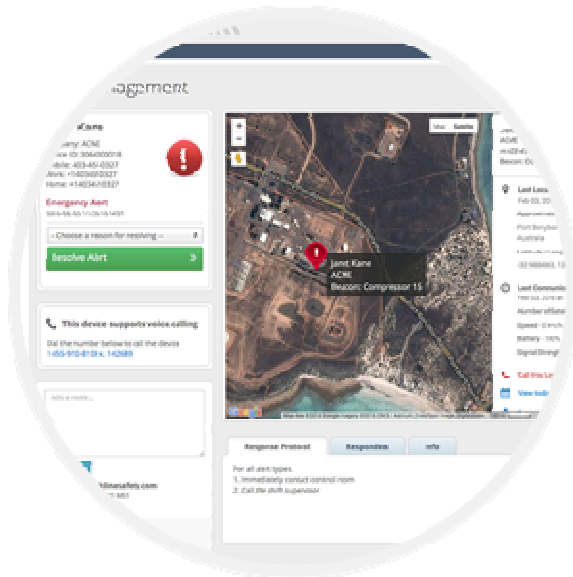


- **No** facility communications needed
- **No** facility power needed
- **No** software installation
- **No** IT support required
- **Everything works right out of the box**

A woman in a call center wearing a headset, looking at multiple computer monitors displaying maps and data.

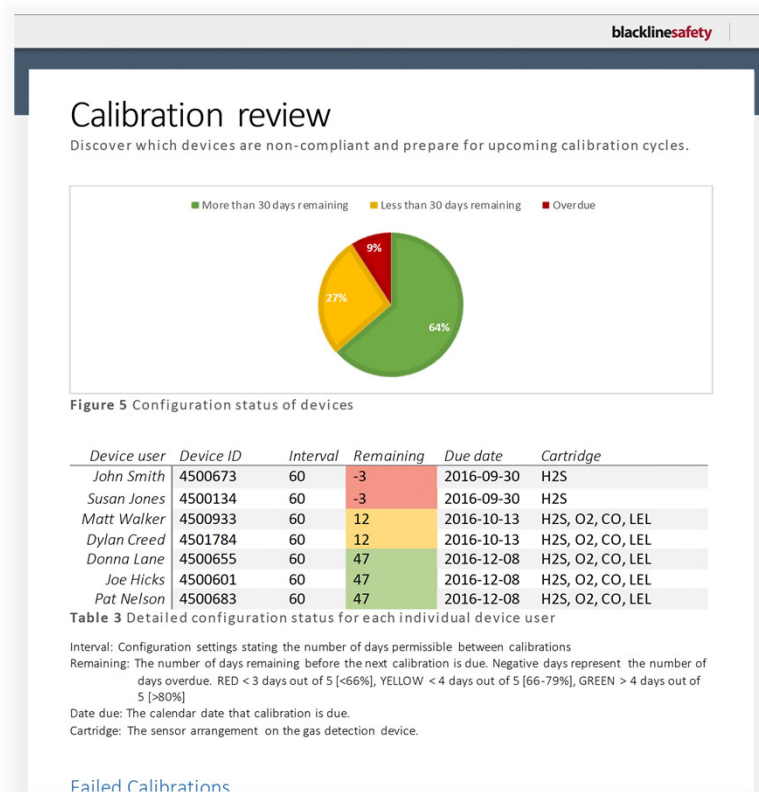
The Online Portal

BLACKLINE LIVE PORTAL



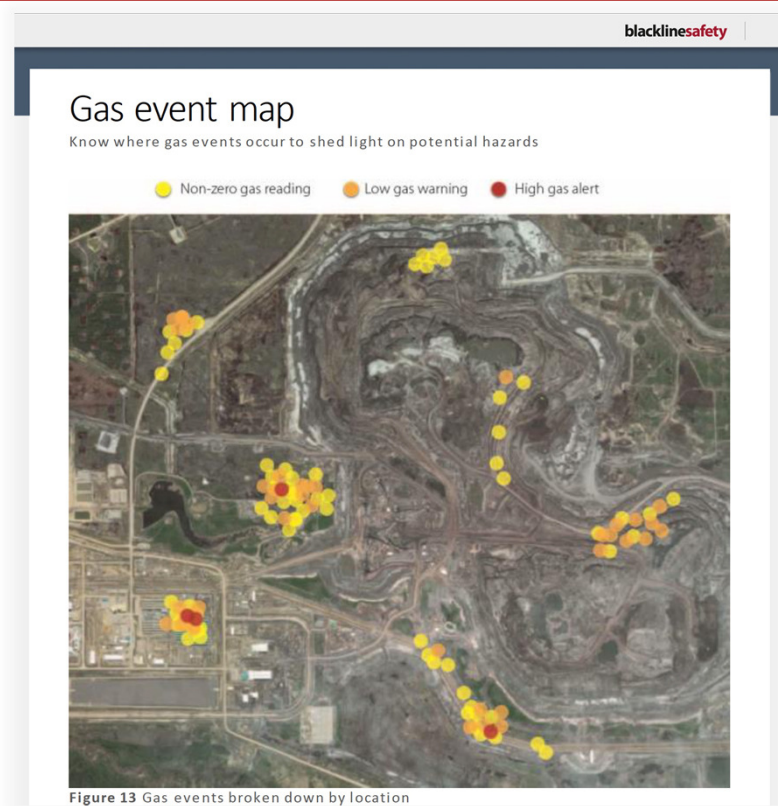
- Supports self-monitoring and Blackline-monitoring
- User and Administrator address book
- Wireless devices configuration profiles
- Alert profiles with custom emergency response protocol
- Map displays employee locations and nearby responders
- Evacuation management and mass notifications
- Compliance dashboard, reporting and gas exposures map

REAL-TIME COMPLIANCE



- Real time reporting = saving time and money
- Calibration and bump test status
- Preventative maintenance
- All gas readings communicated
- All gas readings location-tagged
- Improve productivity and costs
- Real-time compliance dashboard and reporting

HEAT MAP REPORTING



- Mapping period instantly adjustable
- Review Fleet or Individuals
- Track Gas Readings and Alerts
- Track SOS, Fall Detection & Man Down Alerts
- Track Connectivity to Cellular or Satellite Service
- Track Personnel Movement (It's not just for trucks, you know!!!)

EVACUATION MANAGEMENT



- Evacuate an individual, teams or the whole site
- Mass-notify employees of hazards
- Actively account for everyone's safety along the way
- Monitor evacuation progress to muster points

A woman is shown in profile, wearing a headset with a microphone, working at a computer. The computer screen displays a map with various colored overlays and markers. In the background, other computer monitors are visible, showing different data and maps. The overall setting is a control room or operation center.

Safety Operation Center

SAFETY OPERATIONS CENTER



- Optional 24/7 in-house live monitoring team
- Monitoring over 7,500 workers
- Offloads monitoring responsibility to a skilled team
- Each alert operator is highly trained and knowledgeable with Blackline solutions
- Reinforces product training as required
- 99.8% of alerts acknowledged within 60 seconds
- 9-1-1 dispatch option in Canada and the US



Know That Your People Are Safe!

Know when they're Not!

Know Where they Are!

The background of the slide is a photograph of construction workers in a trench. The image is dark and has a halftone or dithered texture. Several workers wearing blue hard hats and high-visibility vests are visible, working in a deep excavation. The lighting is dim, emphasizing the industrial and safety-oriented nature of the scene.

blacklinesafety

We Have Your Back

QUESTIONS?